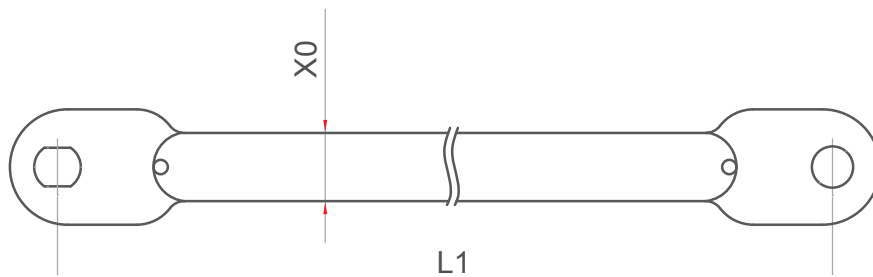


Geländer



Technische Tabelle

| symbol | L 1 | X0 | Gewicht: |
|--------|------|-------------------|----------|
| BA 150 | 1500 | 38x1,8 (33,7x2,6) | 2,9 kg |
| BA 200 | 2000 | 38x1,8 (33,7x2,6) | 4 kg |
| BA 250 | 2500 | 38x1,8 (33,7x2,6) | 5,1 kg |
| BA 300 | 3000 | 38x2,3 (33,7x4,0) | 6,2 kg |

