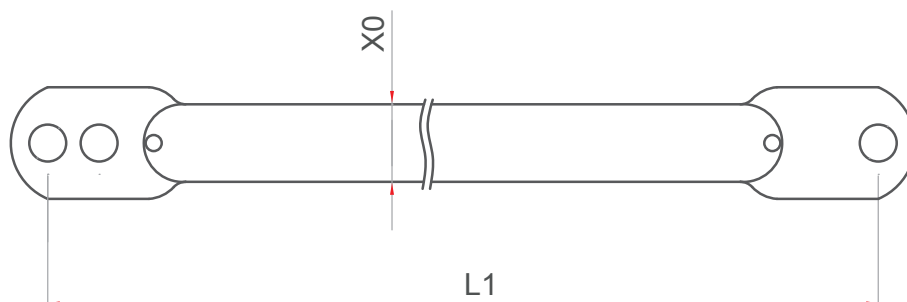


## Vertikalstrebe



### Technische Tabelle

Symbol	L 1	X0	Gewicht:
Z 1,5	2500	Ø48,3x2	5,7 kg
Z 2,0	2828	Ø48,3x2	6,5 kg
Z 2,5	3202	Ø48,3x2	7,3 kg
Z 3,0	3606	Ø48,3x2	8,2 kg

