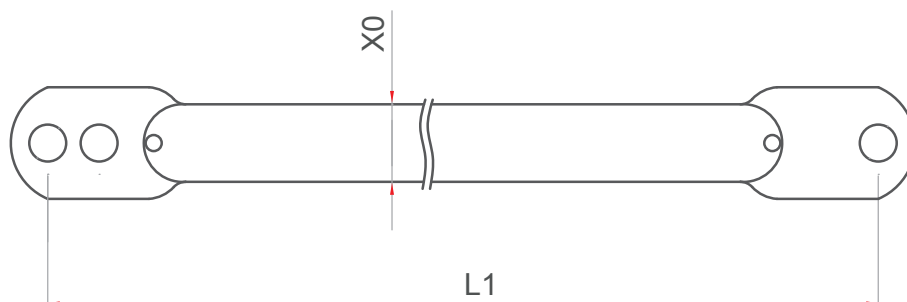


Vertical bracing



Technical table

| Symbol | L 1 | X0 | Weight: |
|--------|------|---------|---------|
| Z 1,5 | 2500 | Ø48,3x2 | 5,7 kg |
| Z 2,0 | 2828 | Ø48,3x2 | 6,5 kg |
| Z 2,5 | 3202 | Ø48,3x2 | 7,3 kg |
| Z 3,0 | 3606 | Ø48,3x2 | 8,2 kg |

